

Judges, Hall Preparation & Afternoon Teas

March	Russell & Pat Edwards..
April	Maggie Chang
May	New Garden Club Year Judges to be announced.

Dates For Your 2020 Diary

Sun 1 st March	General Meeting 1st Meeting of the Calendar Year.
Saturday 21 st March	11am to 3 pm Harmony Day event (aka Living Cultures Festival) Fairfield Museum and Gallery.
Sun 5 th April	General Meeting



Fri 3rd – Tues 14th April 2020

Sun 3 rd May	Annual General Meeting and Presentation Day
Sun 31 st May	General meeting this will take the place of the June meeting as the 1 st Sunday in June is the Queen's Birthday Long Weekend.
Sun 5 th July	General Meeting
Sun 2 nd August	General Meeting
Sat & Sun 12 th & 13 th September	Annual Spring Show & Sun Vintage Village Markets.
Thur 17 th Sept	Entries closing date Spring Garden Competition.
Mon 21 st Sept.	Spring Garden Competition Judging
Sun 11 th October	Meeting and Presentation Day
Sun 1 st November	General Meeting
Sun 6 th December	Christmas Meeting



President	Mrs Frances Martin	9725 2851
Secretary	Mrs Pat Edwards.	9609 3494
Show Secretary	Mr Terry Euridge	9727 5697 euridge@optusnet.com.au
Treasurer	Mrs Genee Euridge	9727 5697 euridge@optusnet.com.au

Web page <https://fcgc.org.au/>

Post all mail to PO Box 320 Fairfield 186

Happy Gardening

Remember "Growth is Life"

What's Doing?

Newsletter of The City of Fairfield Garden Club Inc

Sunday 1st March 2020

Annual fees: Adults \$15.00, Children: \$1.00.

Committee Meeting

The next committee meeting will be held on Friday March 20th at the home of Russ & Pat Edwards 26 Sullivan Street, Fairfield West.

Pointscores 2nd February 2020

This meeting was cancelled due to Extreme heat and smoke haze.

Tips from the Garden.

A blessed relief, the dire dam levels which were at 43.4% are now 82%. Level 2 restrictions have ended today and revert to level 1.

Under Level 1 water restrictions

You can:

- water your garden with a hand-held hose fitted with a trigger nozzle before 10 am or after 4 pm
- water your garden with a drip irrigation or 'smart' irrigation system
- wash vehicles, boats and buildings using a hose with a trigger nozzle, high pressure cleaning equipment or a bucket and sponge.

You can't:

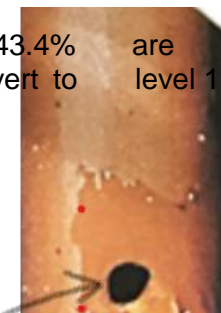
- hose hard surfaces except for spot cleaning for health and safety reasons using a hose with a trigger nozzle
- leave hoses unattended
- use sprinklers and watering systems except for drip irrigation or 'smart watering systems.

Businesses must apply for an exemption if they need use water outdoors and can't meet Level 1 water restrictions. If you have a current exemption for your business or have already applied, you don't need to reapply.

We all still need to do our bit to save water.



"Growth is Life"



Drip irrigation hose with drip valve built into hose at every 300mm. Use shallowly buried in lawns or vegetable/flower beds.



to

CITY OF FAIRFIELD GARDEN CLUB SCHEDULE FOR SUNDAY 5th April 2020 GENERAL MEETING

ALL ENTRIES TO BE STAGED BY 2.00p.m. PROMPT

Classes 1 - 9 Miscellaneous cuts and classes 16-17 Vegetables & Fruit exhibits must be grown by the person/s exhibiting. Classes 10-15 exhibits must be the property of the exhibitor/s for at least 3 months prior to showing (Children 1 month). Decorative 18-20 flowers and foliage may be purchased unless scheduled otherwise. Fresh flowers to be used unless otherwise stated. Embellishments are allowed. Stems to be in water. Children may enter in any section or class.

CLASS MISCELLANEOUS (to be staged in supplied vases)

- 1) 1 Vase 3 Cuts Geranium or Pelargonium with Foliage Attached. NND
- 2) 1 Vase 3 Cuts Flowering Tree, Shrub or Climber NOS NND
- 3) 1 Vase 3 cuts of Multi-Leafed Foliage DISTINCT
- 4) 1 Vase, 3 Cuts if small, 1 cut if Large, Bulb, Corm or Rhizome NOS SAME.
- 5) 1 Vase 3 Cuts of same flower NOS.
- 6) 1 Vase 3 cuts Flowering Australian Native/Hybrid Growth NND
- 7) 1 Vase 3 cuts Single-Leafed Foliage DISTINCT
- 8) 1 Vase 3 Cuts Chrysanthemums. NND
- 9) 1 Vase 3 Cuts Roses NND

POT PLANTS

- 10) 1 Container Begonia/s Flowering or Foliage.
- 11) 1 Container of Foliage Plant/s NO
- 12) 1 Container of Flowering Plant/s NOS
- 13) 1 Container Geranium/s or Pelargonium/s Flowering or Foliage
- 14) 1 Hydroponic Exhibit
- 15) 1 Container Cactus/i and or Succulent/s

VEGETABLES AND FRUIT

- 16) One vegetable unit
- 17) One fruit unit

DECORATIVE

- 18) "Easter" Foliage and Flowers
- 19) "Anzac" Foliage and Flowers
- 20) "Autumn Colours" Foliage Only

Entries to be left on the bench for at least half an hour after close of meeting for members enjoyment. All members are responsible for removal of their entries and the emptying and putting away of bottles, the replacing of stands, trays and caps they have used to where they belong and for the disposal of entry cards and the removal of award certificates. Thank You.

POINTS ARE AWARDED AS FOLLOWS : 1 point is given for each class entered (please note only 1 point per class entered not 1 point per exhibit , so if you enter 5 things in the same class you only get 1 point)

GRAND CHAMPION 6 Points , 1st Prize 5 Points, 2nd Prize 4 Points, 3rd Prize 3 Points, Highly Commended 2 Points.

If you win a prize in a class you lose your point for entering that class, but you only lose that point once, e.g. if you get 1st, 2nd and 3rd in a class you get 12 points for that class..

EXHIBITORS PLEASE NOTE: The Show secretary must be informed of all entries so that they can be recorded by 1.55pm and exhibits must be staged by 2.00pm prompt, !!!! -- no exemptions.

DEFINITIONS:

NND not necessarily distinct. (They can be the same).

NOS not on schedule. (E.g. if you are entering the "1 cut Flowering Tree, Shrub or Climber" it must not be an Australian Native or Rose because there is a class for them on the schedule.

DISTINCT means different. (Same genus of flower, different colour, is not Distinct)